

In vitro Studies of Polycaprolactone Nanofibrous Scaffolds Containing Novel Gehlenite Nanoparticles

Abstract

Background: Recently, many studies have been done on the physicochemical properties and biocompatibility of polycaprolactone (PCL) scaffolds containing ceramic reinforcers in the field of bone tissue engineering. In this study, the physical, mechanical and biological properties of electrospun-fabricated PCL scaffolds containing gehlenite (GLN) nanoparticles (NPs) as a novel bioceramic were investigated. **Methods:** To obtain the appropriate mechanical properties, the solution contains 3%, 5%, 7%, and 10% wt. of GLN NPs were prepared. Fiber morphology was investigated by scanning electron microscopy. In order to evaluate the NPs distribution, Energy Dispersive X-Ray Spectroscopy, X-ray diffraction, and Fourier Transform Infrared Spectroscopy spectroscopy were used. The scaffold hydrophilicity was measured by the water contact angle test. The tensile test was used to check the mechanical strength of the scaffold. The proliferation of MG-63 cells was evaluated by the MTT test. Alkaline phosphatase (ALP) activity of MG-63 cells was also examined. **Results:** Average fibers' diameters and porosity of PCL/GLN7% were obtained 150–500 nm and 80%, respectively. An increase in the scaffold hydrophilicity was observed by the addition of GLN NPs. The strength of PCL/GLN7% was higher than the blank PCL scaffold. Cell proliferation of scaffolds containing GLN was higher than the blank PCL scaffold. A significant increase in the secretion of ALP for GLN-loaded scaffolds was seen. **Discussion:** The results showed that PCL/GLN7% composite scaffold could be a good candidate for bone tissue engineering. **Conclusion:** The overall results indicate that the scaffold (PCL /GLN7%) has suitable mechanical properties, a great cell compatibility for bone tissue regeneration.

Keywords: Electrospinning, gehlenite nanoparticles, gelatin, polycaprolactone, tissue engineering

Submitted: 26-Jun-2020

Revised: 04-Jul-2020

Accepted: 01-Aug-2020

Published: 24-May-2021

Introduction

Regarding the increase in the average age of the population, bone disorders have become a global concern. This has led to paid particular attention to bone problems and defects.^[1] Despite the self-healing ability of bone, there are some clinical challenges of bone injuries in the case of fractures, joint arthroplasties, and dental defects that interfere with the normal bone healing procedure, where autogenous and allogeneous bone grafts cannot solve these problems.^[2-4] Therefore, the treatment of large bone defects is an issue that remains a significant challenge for orthopedic surgeons.^[2] To reform bone defects, bone grafts have been used regularly.^[1] Besides, tissue engineering techniques and biomaterials-based therapeutics are an

alternative way to respond to these issues.^[5-7]

There are many methods for the fabrication of bone tissue engineering scaffolds,^[8-10] among them, electrospinning is of particular interest because of extracellular matrix biomimicking characteristics (e.g., porosity and mechanical properties), ease of fabrication, high surface to volume ratio, possible surface modification which attracts researchers' attentions.^[11-13]

There are many natural and synthetic polymeric biomaterials that are used for biomedical applications.^[14] Polycaprolactone (PCL) is one of the most attractive ones because of desired characteristics including low melting point (59°C–64°C, above body temperature), proper drug loading, biocompatibility, solubility, exceptional mixability properties, and the ability to

This is an open access journal, and articles are distributed under the terms of the Creative Commons Attribution-NonCommercial-ShareAlike 4.0 License, which allows others to remix, tweak, and build upon the work non-commercially, as long as appropriate credit is given and the new creations are licensed under the identical terms.

For reprints contact: WKHLRPMedknow_reprints@wolterskluwer.com

How to cite this article: Baghbadorani MA, Bigham A, Rafienia M, Salehi H. *In vitro* studies of polycaprolactone nanofibrous scaffolds containing novel gehlenite nanoparticles. *J Med Sign Sens* 2021;11:131-7.

Moloud Amini Baghbadorani¹, Ashkan Bigham², Mohammad Rafienia³, Hossein Salehi⁴

¹Student Research Committee, School of Advanced Technology in Medicine, Isfahan

University of Medical Sciences,

²Department of Biomaterials,

Tissue Engineering and

Nanotechnology, School of

Advanced Technologies in

Medicine, Isfahan University of

Medical Sciences, ³Biosensor

Research Center, Isfahan

University of Medical Sciences,

⁴Department of Anatomical

Sciences and Molecular Biology,

School of Medicine, Isfahan

University of Medical Sciences,

Isfahan, Iran

Address for correspondence:

Prof. Mohammad Rafienia,

Biosensor Research Center,

Isfahan University of Medical

Sciences, Isfahan, Iran.

E-mail: m_rafienia@med.mui.ac.ir

ac.ir

Access this article online

Website: www.jmssjournal.net

DOI: 10.4103/jmss.JMSS_42_20

Quick Response Code:



maintain sufficient physical and mechanical properties for tissue growth.^[15] Mineral and organic nanostructures were introduced to PCL scaffolds to resolve the drawbacks of PCL in some biomedical applications (e.g., unsuitable mechanical and electrical properties).^[16]

It has been proved that nanoceramic-loaded scaffolds improve biocompatibility and mechanical properties of scaffolds.^[11] According to the intrinsic nature of bone tissue which contains mineral and organic sections, adding nanoceramics to fabricated organic scaffolds seems to bring prepared structures closer to natural bones in terms of compressive strength and elastic modulus.^[14,17] Therefore, it can be expected that the use of nanoparticles (NPs) will have a significant impact on the development of microstructure, biological and mechanical behavior of composite systems for applications of bone tissue engineering.^[18]

Gehlenite (GLN) ($\text{Ca}_2\text{Al}_2\text{SiO}_7$) is a silicate-based mineral compound, and its crystalline structure is classified as a subset of sorosilicates. The values of bending strength, elastic modulus, and fracture toughness of this compound are MPa 142 ± 12.1 MPa, 108 ± 6.8 GPa, and 2.32 ± 0.12 MPa. m 0.5 , respectively.^[19,20] These values are significantly higher than other bioceramics, such as calcium phosphates, bioactive glasses, and calcium silicates. For example, the bending strength, elastic modulus, and stiffness of the GLN are about three times higher than 45S5 bioactive glass and hydroxyapatite. The biocompatibility of GLN has been studied in some studies.^[19,21] Therefore, considering the suitable mechanical and biological properties of GLN, it seems that the use of this compound is very promising for bone tissue engineering applications.

This study aimed to fabricate a PCL/GLN scaffold for use in bone tissue engineering. The morphology of the prepared fibers, mechanical and chemical properties, hydrophilicity, and cellular behavior were also evaluated.

Materials and Methods

Materials

PCL (Mw = 80,000) provided from Sigma-Aldrich (USA). The solvent 2,2,2-Trifluoroethanol (TFE) is obtained from Roth (Karlsruhe, Germany). The synthesizing process for GLN NPs is done according to our previous study.^[20]

Methods

Scaffolds fabrication method

The GLN NPs dispersed into TFE solution (24 h) by using ultrasound. Different %wt. of GLN NPs, including 3, 5, 7, and 10% wt. were added to the 10% wt PCL solution to evaluate the effects of varying compositions on the physical and biological properties of scaffolds. The needle gauge, voltage, feeding speed, tip distance for electrospinning step were adjusted, 23G, 22–24 kV, 0.8–1 mL/h, and 18 cm, respectively. Nanofibrous scaffolds are dried in a vacuum oven at room temperature for 7 days.

Scaffolds characterization

Structural evaluations of prepared scaffolds, including morphology, fibers' diameters, and scaffold porosity percentage, were carried out by scanning electron microscope (scanning electron microscopy [SEM], Philips XL30). Image J software was used for the determination of the average diameter of fibers. The diameter of the fibers was calculated as the mean \pm standard deviation ($n > 40$).

Energy dispersive X-ray spectroscopy and X-ray diffraction to analysis of scaffolds

Energy dispersive X-ray spectroscopy (EDS) is a current method for the evaluation of elements ratio in samples. Therefore, to confirm the presence of GLN NPs in PCL/GLN scaffold, EDS mapping method was used.

The structural and microstructural analyses of all scaffolds including PCL, GLN and PCL/GLN are accomplished through X-ray diffraction (XRD, Philips TW3710, Netherlands).

Fourier transform infrared spectroscopy analysis

Chemical analysis was performed using fourier transform infrared spectroscopy (FTIR) (IFS-66 V/S, Bruker, Ettlingen, Germany) in the range of $400\text{--}4000\text{ nm}^{-1}$ at room temperature.

Evaluation of scaffold hydrophilicity

In order to evaluate the hydrophilicity changes of PCL, PCL/GLN3%, PCL/GLN5%, and PCL/GLN7%, drops of deionized water were placed at three different points on the scaffold. The contact angles were recorded after 2, 5, and 10 s. This test was performed based on ASTM-D7334.

Tensile strength

To evaluate the effect of adding different amounts of GLN NPs on scaffolds mechanical property, they were cut $0.3\text{ cm} \times 5\text{ cm}$. Then, they were put in tensile testing equipment based on EN ISO, 05/1995 (Zwick Z050, Germany, load cell: 20 N, 1 mm/min, L0 = 2 cm).

In vitro studies

Cell morphology assessment

One and 7 days after cell culture, the scaffolds were washed three times with phosphate-buffered saline, fixed with glutardialdehyde (3%v/v), and dehydrated with ethanol (50%, 70%, 80%, 905, and 100% v/v). Morphology of MG-63 cells was assessed by SEM images. Cell attachment analysis and confluency levels were evaluated by a fluorescent image analyzer (Olympus, DP72, Japan).

Cell proliferation assay

Direct contact cytotoxicity evaluation was done at 1, 3, and 7 days after cell culture based on ISO 10993-5 for PCL and PCL/GLN scaffolds. After the mentioned days, cell culture was removed and substituted by MTT solution (10% v/v

in Dulbecco's Modified Eagle Medium, Fisher Scientific, India). After 4 h of incubation time, the solution was replaced by dimethyl sulfoxide and incubated for 1 h. The absorbance was read at 570 nm by a microplate reader (Microplate Reader Model 1680, Bio-Rad, USA).

Alkaline phosphatase assay

To quantify alkaline phosphatase (ALP) activity of MG-63 cells after 7, 14, and 21 days, the Alkaline phosphatase assay was done based on the manufacturer's guidance (Pars Azmoon, Iran). Briefly, the supernatants were obtained, and a *p*-nitrophenyl phosphate transformed to a *p*-nitrophenol. The reaction was terminated by adding 100 μ l NaOH solution (1 N). The absorbance was read by an ELISA reader (Microplate Reader Model 1680, Bio-Rad, USA) at 405 nm.

Statistical analysis

All experiments were repeated at least three times or more. One-Way analysis of variance are used for analyzing the results.

Results and Discussion

Morphology of nanofibers

SEM micrographs of electrospinning fibers of PCL and PCL/GLN scaffolds with different GLN ratios as well as the fiber diameters are given in Figure 1. The results show that the addition of GLN NPs does not affect the uniformity of fibers in PCL/GLN. There are significant amounts of NPs agglomeration in fibers contain GLN 10%. Therefore, PCL/GLN7% was selected as an optimal sample. The structure of PCL and PCL/GLN7% was uniform. The average diameter and porosity of scaffolds were about 400 nm and 80%, respectively.

The EDS test was used to ensure the presence of NPs in the scaffolds. The results of the EDS analysis [Figure 2] for PCL/GLN7% confirm the presence of calcium, aluminum, and silicon elements, which are attributed to the GLN structure.

X-ray diffraction analysis

The XRD patterns of GLN, PCL and PCL/GLN are presented through Figure 3. There are two sharp peaks visible in the XRD pattern of PCL at 21.5° and 23.75° attributing to the crystalline nature of PCL. Besides the two peaks of PCL, there is a peak at 31.46° appeared in the XRD pattern of PCL/GLN7% representing the sharpest peak of GLN NPs (JCPDS 001-0982). Due to the low weight percentages of GLN NPs (7%), the other XRD peaks of GLN are not appeared.

Fourier transform infrared spectrometry

The FTIR analysis results of PCL and GLN functional groups are presented in Figure 4. In the FTIR results for PCL different peaks can be seen, including CH₂ symmetric and asymmetric stretching (2863, 2940 cm⁻¹),

C = O stretching (1721 cm⁻¹), C-O and C-C stretching (1292 cm⁻¹), C-O-C asymmetric stretching (1297 cm⁻¹), and C-O-C symmetric stretching (1162 cm⁻¹).^[22] In the scaffolds containing GLN were not seen significantly different with blank scaffolds due to overlapping polymer peaks and GLN. Si-O peak (634 cm⁻¹) was observed in PCL/GLN 7%, and it can be because of low amounts of GLN NPs.

Mechanical analysis

Figure 5 shows the stress-strain curves of PCL, PCL/GLN3%, PCL/GLN5%, PCL/GLN7%. As the NPs amount increases, the tensile strength of nanofibers increases. On the other hand, the analysis of length increase for scaffolds which contains above 3 wt. % GLN, show that PCL/GLN scaffolds have become more fragile than PCL scaffolds.

Analysis of surface hydrophilicity

The hydrophilicity/hydrophobicity properties of scaffolds play an important role in the determination of the initial cell adhesion and migration, mechanical properties, and degradation.^[23] Table 1 shows the water droplet contact angle for PCL, PCL/GLN3%, PCL/GLN5%, PCL/GLN7% after 2, 5, and 10 s. Angles >90° indicate hydrophobicity property of scaffolds. PCL/GLN7% shows a contact angle of <90°, which confirms that the scaffold is hydrophilic. The contact angle amount is related to different parameters such as the nature of the ingredients, surface properties (e.g., surface roughness).^[22] According to GLN NPs hydrophilic nature, by adding GLN NPs to PCL scaffolds, contact angles slightly reduced.

Viability of MG-63 cells

The MTT test was performed to evaluate the proliferation of MG-63 cells on PCL and PCL/GLN7% on days 1, 3, and 7 after culture [Figure 6]. There were no significant differences between samples on 1 and 3 days ($P \geq 0.05$). Less hydrophilic property of PCL can be a reason for less cell survival in comparison to GLN-loaded scaffolds. On day 7, the cell proliferation of PCL/GLN7% is higher than PCL scaffold ($P \leq 0.05$). This suggests that GLN NPs stimulate cell proliferation rates after 7 days. These results may prove the role of GLN NPs in cell proliferation and adhesion.^[19]

Cell adhesion and cell morphology on the scaffolds

To investigate cell adhesion behavior of scaffolds, SEM, and fluorescent images were collected 1 and 7 days after culture [Figure 7]. Based on SEM images on 1 day, the cells attached well. Both scaffolds showed acceptable cell

Table 1: Results of contact angle for scaffolds in intervals of 2, 5, and 10 s

Samples	PCL	PCL/GLN3%	PCL/GLN5%	PCL/GLN7%
After 2 s	130	130	120	66
After 5 s	102	108	101	58
After 10 s	79	70	84	51

PCL – Polycaprolactone

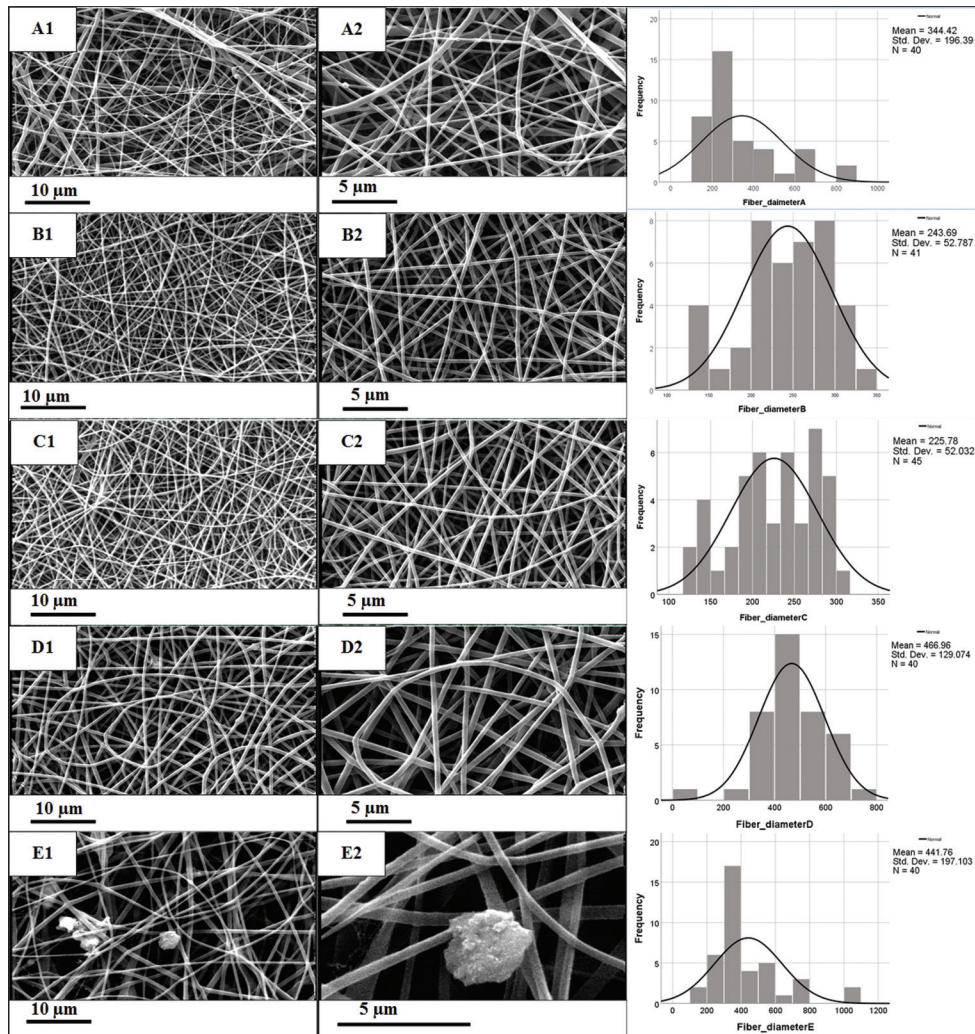


Figure 1: Scanning electron microscopy images of scaffolds in 2000 and 4000 magnifications and histogram evaluation (A1 and A2): polycaprolactone, (B1 and B2): Polycaprolactone/gehlenite 3%, (C1 and C2): polycaprolactone/gehlenite 5%, (D1 and D2): polycaprolactone/gehlenite 7%, and (E1 and E2): polycaprolactone/gehlenite 10%

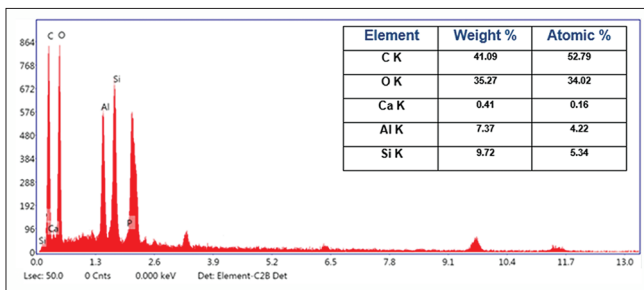


Figure 2: Elements at the surface of polycaprolactone/gehlenite 7% scaffold according to EDS analysis

compatibility, adhesion, and expansion. However, PCL/GLN7% scaffold had far more cells than PCL scaffold. On day 7, both SEM and fluorescent images showed higher cell density in PCL/GLN7% scaffold. The presence of GLN NPs increased cell proliferation and adhesion on PCL/GLN7% scaffold compared to PCL scaffold. These results were compatible with the results of the MTT test.

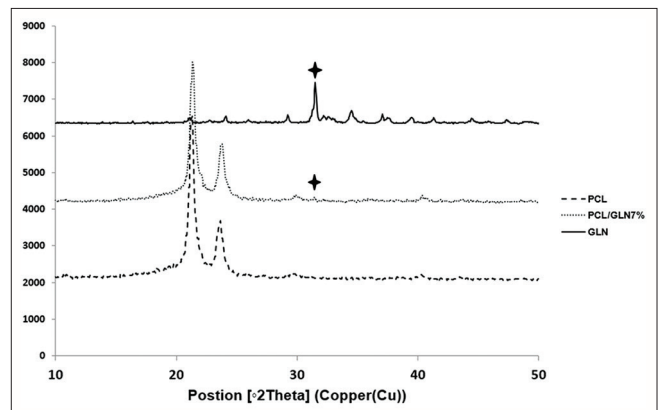


Figure 3: The X-ray diffraction patterns of polycaprolactone, gehlenite and polycaprolactone/gehlenite 7%

ALP analysis alkaline

The evaluation of ALP activity is one of the most common osteogenesis assessments and is used to measure bone cell

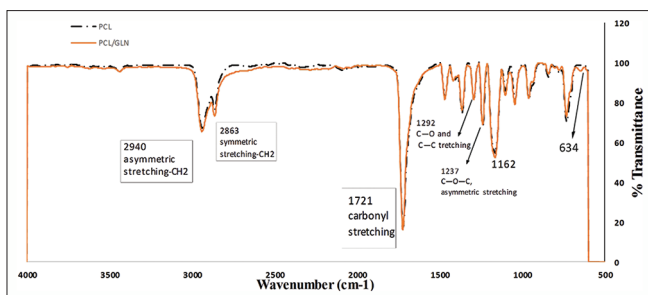


Figure 4: FTIR spectroscopy diagram for polycaprolactone and polycaprolactone/gehlenite 7% samples

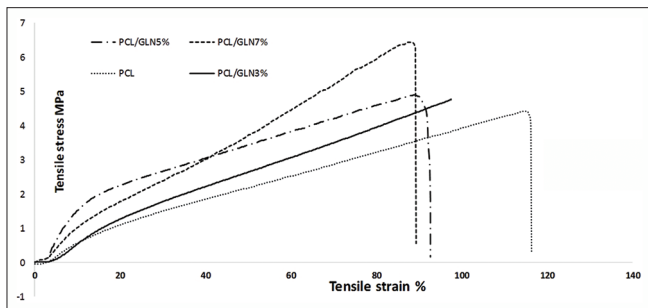


Figure 5: Stress-strain curve of polycaprolactone, polycaprolactone/gehlenite 3%, polycaprolactone/gehlenite 5%, polycaprolactone/gehlenite 7% samples

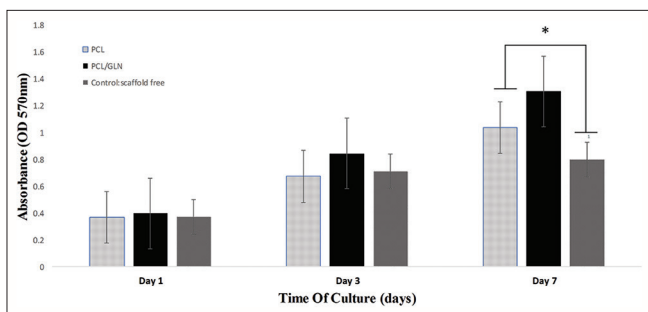


Figure 6: Cell proliferation assessment on 1, 3, and 7 days

differentiation.^[24,25] ALP activity of MG-63 cells cultured on composite scaffolds were evaluated at 7, 14, and 21 days after culture [Figure 8]. On day 7, no significant differences were seen between scaffolds ($P \geq 0.05$). On the 14 and 21 days, significant ALP activity was observed in PCL/GLN7% compared to PCL scaffold and control sample ($P < 0.05$), which can be due to the presence of GLN. Silicate ceramics release Ca and Si ions around the environment.^[19] In one study, the release of Si ions from silicate ceramics has been introduced as one of the most effective factors in osteogenic properties.^[26] In another one, the release of Si ion in the surrounding environment increased cell proliferation, protein synthesis, and ALP activity of osteoblasts.^[27]

Conclusions

In this study, composite GLN-loaded scaffolds were prepared using the electrospinning method, and their properties were also investigated. According to results, PCL/GLN7% scaffold showed a porous and homogeneous microstructure, with the appropriate porosity, cell adhesion, and proliferation. The scaffold containing 7wt.% GLN was chosen as the optimal sample because of a large amount of agglomerated GLN in GLN10%.

The higher tensile strength of PCL/GLN composite scaffold showed that the presence of these NPs in the polymer substrate strengthened the resulting composite and improved its mechanical strength. The hydrophilicity of scaffolding increased after the addition of gehlenite and GLN, which is suitable for osteoblasts adhesion and proliferation.

The results of the cell proliferation test showed that both scaffolds with and without GLN had no significant toxicity. MG-63 cells also showed better adhesion and proliferation on PCL/GLN nanofibers than PCL nanofibers. The amount of ALP secretion in PCL/GLN

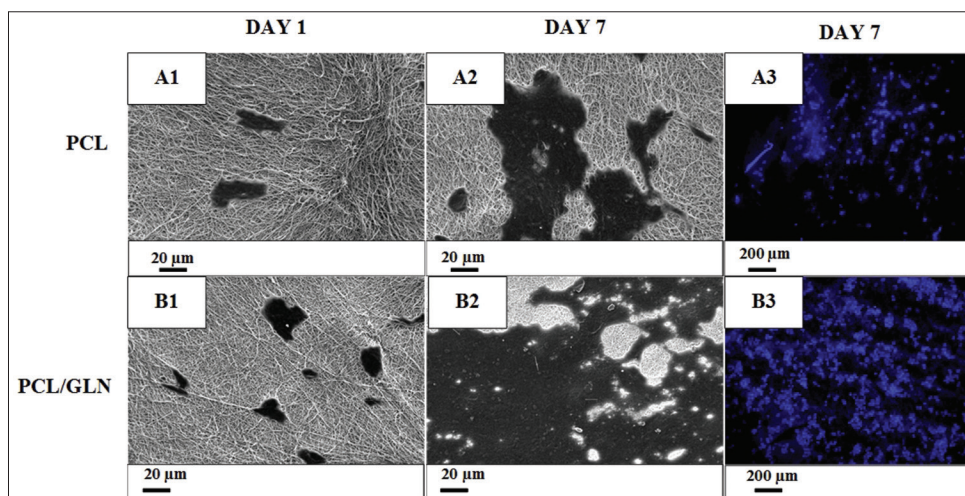


Figure 7: Evaluation of cell morphology 1 day after culture, (A1 and A2) polycaprolactone in magnifications of 500 and 2000. (B1 and B2) polycaprolactone/gehlenite 7% in magnifications of 500 and 2000. (A3 and B3) fluorescent images of staining by DAPI (blue color = cell nucleus) for polycaprolactone and polycaprolactone/gehlenite 7%, respectively after 7 days

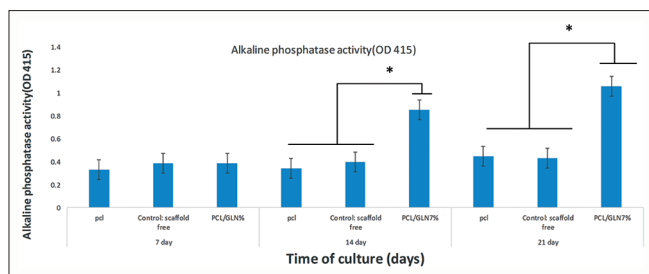


Figure 8: ALP activity analysis of scaffolds on days 7, 14, and 21 after cell culture

nanocomposite scaffolds was significantly higher than PCL scaffolds, and this could indicate better activity of osteoblast cells on this scaffold. The results show that the PCL/GLN7% can be a good candidate for bone tissue engineering.

Acknowledgments

This research was supported by student research committee of Isfahan university of medical science. (Grant No 197125).

Financial support and sponsorship

None.

Conflicts of interest

There are no conflicts of interest.

References

- Bose S, Roy M, Bandyopadhyay A. Recent advances in bone tissue engineering scaffolds. *Trends Biotechnol* 2012;30:546-54.
- Oryan A, Alidadi S, Moshiri A. Current concerns regarding healing of bone defects. *Hard tissue* 2013;2:1-2.
- Balagangadharan K, Dhivya S, Selvamurugan N. Chitosan based nanofibers in bone tissue engineering. *Int J Biol Macromol* 2017;104:1372-82.
- Bigham A, Aghajanian AH, Saudi A, Rafienia M. Hierarchical porous Mg₂SiO₄-CoFe₂O₄ nanomagnetic scaffold for bone cancer therapy and regeneration: Surface modification and *In vitro* studies. *Mater Sci Eng C* 2020;109:110579.
- Hadidi M, Bigham A, Saebnoori E, Hassanzadeh-Tabrizi SA, Rahmati S, Alizadeh ZM, *et al.* Electrophoretic-deposited hydroxyapatite-copper nanocomposite as an antibacterial coating for biomedical applications. *Surf Coatings Technol* 2017;321:171-9.
- Bigham A, Aghajanian AH, Allahdaneh S, Hassanzadeh-Tabrizi SA. Multifunctional mesoporous magnetic Mg₂SiO₄-CuFe₂O₄ core-shell nanocomposite for simultaneous bone cancer therapy and regeneration. *Ceram Int* 2019;45:19481-8.
- Ansari M, Bigham A, Ahangar HA. Super-paramagnetic nanostructured CuZnMg mixed spinel ferrite for bone tissue regeneration. *Mater Sci Eng C* 2019;105:110084.
- Chan BP, Leong KW. Scaffolding in tissue engineering: General approaches and tissue-specific considerations. *Eur Spine J* 2008;17 Suppl 4:467-79.
- Bigham A, Aghajanian AH, Behzadzadeh S, Sokhani Z, Shojaei S, Kaviani Y, *et al.* Nanostructured magnetic Mg₂SiO₄-CoFe₂O₄ composite scaffold with multiple capabilities for bone tissue regeneration. *Mater Sci Eng C* 2019;99:83-95.
- Aghajanian AH, Bigham A, Khodaei M, Hossein Kelishadi S. Porous

titanium scaffold coated using forsterite/poly-3-hydroxybutyrate composite for bone tissue engineering. *Surf Coatings Technol* 2019;378:124942.

- Khorshidi S, Solouk A, Mazinani S, Mirzadeh H. A Review on Different Approaches for Improving Cell Infiltration in Electrospun Nanofibrous Scaffolds. *Pathobiology Research*. 2016 Jan 10;18:1-22.
- Gil-castell O, Badia JD, Ribes-greus A. Tailored electrospun nanofibrous polycaprolactone/gelatin scaffolds into an acid hydrolytic solvent system. *Eur Polym J* 2018;101:273-81.
- Mahdavi FS, Bayrami R, Akbari H, Seyedjafari E, Are E, Amini M. Nanofibrous Scaffolds Containing Hydroxyapatite and Microfluidic-Prepared Polyamidoamin/BMP-2 Plasmid Dendriplexes for Bone Tissue Engineering Applications; 2020.
- Mallick S, Tripathi S, Srivastava P. Advancement in scaffolds for bone tissue engineering: a review. *IOSR J Pharm Biol Sci*. 2015;10:37-54.
- Hajjali F, Tajbaksh S, Shojaei A. Fabrication and properties of polycaprolactone composites containing calcium phosphate-based ceramics and bioactive glasses in bone tissue engineering: A review. *Polym Rev* 2017;1-44.
- Abedalwafa M, Wang F, Wang L, Li C. Biodegradable poly-epsilon-caprolactone (PCL) for tissue engineering applications: A review. *Rev Adv Mater Sci* 2013;34:123-40.
- Foroughi F, Hassanzadeh-Tabrizi SA, Bigham A. In situ microemulsion synthesis of hydroxyapatite-MgFe₂O₄ nanocomposite as a magnetic drug delivery system. *Materials Science and Engineering: C*. 2016;68:774-9.
- Hofmann H. Diagnosis of prenatal infections. I. Cytomegaly and measles. *Ric Clin Lab* 1977;7 Suppl 2:67-9.
- Roohani-Esfahani SI, No YJ, Lu Z, Ng PY, Chen Y, Shi J, *et al.* A bioceramic with enhanced osteogenic properties to regulate the function of osteoblastic and osteoclastic cells for bone tissue regeneration. *Biomed Mater* 2016;11:035018.
- Rafienia M, Bigham A, Saudi A, Rahmati S. Gehlenite nanobioceramic: Sol-gel synthesis, characterization, and *In vitro* assessment of its bioactivity. *Mater Lett* 2018;225:89-92.
- Bigham A, Kermani S, Saudi A, Aghajanian A, Rafienia M. On the bioactivity and mechanical properties of gehlenite nanobioceramic: A comparative study YR - 2020/4/1. *J Med Signals Sensors* 2020;10:105-12.
- Toloue EB, Karbasi S, Salehi H, Rafienia M. Potential of an electrospun composite scaffold of poly (3-hydroxybutyrate)-chitosan/alumina nanowires in bone tissue engineering applications. *Mater Sci Eng C* 2019;99:1075-91.
- Yu L, Dean K, Li L. Polymer blends and composites from renewable resources. *Prog Polym Sci*. 2006;31:576-602.
- Sattary M, Khorasani MT, Rafienia M, Rozve HS. Incorporation of nanohydroxyapatite and vitamin D3 into electrospun PCL/Gelatin scaffolds: The influence on the physical and chemical properties and cell behavior for bone tissue engineering. *Polymers for Advanced Technologies* 2018;29:451-62.
- Bigham A, Saudi A, Rafienia M, Rahmati S, Bakhtiyari H, Salahshouri F, *et al.* Electrophoretically deposited mesoporous magnesium silicate with ordered nanopores as an antibiotic-loaded coating on surface-modified titanium. *Mater Sci Eng C Mater Biol Appl* 2019;96:765-75.
- Zhai W, Lu H, Wu C, Chen L, Lin X, Naoki K, *et al.* Stimulatory effects of the ionic products from Ca-Mg-Si bioceramics on both osteogenesis and angiogenesis *In vitro*. *Acta Biomater* 2013;9:8004-14.
- Wang X, Li X, Ito A, Sogo Y. Synthesis and characterization of hierarchically macroporous and mesoporous CaO-MO-SiO₂-P₂O₅ (M = Mg, Zn, Sr) bioactive glass scaffolds. *Acta Biomater* 2011;7:3638-44.

BIOGRAPHIES



Moloud Amini Baghbadorani obtained her M.Sc degree in Biomaterials from Isfahan University of Medical Sciences in 2020. Her research interests focus on biomaterials, composites, skin and bone tissue engineering.

Email: amini993.m@gmail.com



Ashkan Bigham received his M.Sc of Materials Science and Engineering from Islamic Azad University of Najafabad in 2016. Currently he is a research member of Prof. Mohammad Rafienia's group in the Department of Biomaterials of Isfahan University of Medical Sciences, Isfahan, Iran. His research interests focus on the

synthesis and application of bioceramics and biocomposites for bone tissue regeneration.

Email: ashkanbigham@gmail.com



Mohammad Rafienia obtained his B.Sc and both M.Sc and Ph.D. from Isfahan University of Technology and Amir Kabir University of Technology, respectively. He is currently the Professor of Biosensor Research Center of Isfahan University of Medical Sciences. His research expertise is in biomaterials, tissue engineering, and

drug delivery.

Email: m_rafienia@med.mui.ac.ir



Hossein Salehii obtained his M.Sc in Histology from Kermanshah University of Medical Sciences; he obtained his PhD in Anatomical Sciences (Histology and embryology) from Isfahan University of Medical Sciences and Royan Institute. His research expertise is in Cell Therapy and Biology.

Email: ho_salehi@med.mui.ac.ir
